



ELSEVIER

Journal of Chromatography A, 950 (2002) 293–299

JOURNAL OF  
CHROMATOGRAPHY A

www.elsevier.com/locate/chroma

Short communication

## Electrophoretic behaviour of pharmacologically active alkylxanthines

Marcelo Blanco\*, Ismael Valverde

*Departamento de Química, Unidad de Química Analítica, Universidad Autónoma de Barcelona, E-08193 Bellaterra (Barcelona), Spain*

Received 30 October 2001; received in revised form 28 December 2001; accepted 31 December 2001

### Abstract

The electrophoretic behaviour of ionizable and neutral alkylxanthines commonly used in pharmaceutical preparations was studied. The performance of various separation modes including capillary zone electrophoresis (CZE), cyclodextrin electrokinetic chromatography, and micellar electrokinetic chromatography (MEKC) with either sodium dodecyl sulfate (SDS) or bile salts as surfactants, was assessed. CZE in an alkaline medium successfully separates ionizable xanthines and dyphylline. The addition of carboxymethyl- $\beta$ -cyclodextrin to the background electrolyte allows only partial resolution of neutral xanthines. Based on MEKC results, bile salts exhibit more discrimination ability than SDS to separate similar xanthines. The best results are provided by taurodeoxycholic acid, which ensures baseline separation of xanthines. © 2002 Published by Elsevier Science B.V.

*Keywords:* Pharmaceutical analysis; Alkylxanthines; Xanthines; Surfactants

### 1. Introduction

Alkylxanthines constitute a family of compounds widely used in pharmaceutical preparations on account of their bronchodilating and vasodilating properties. The structures of these species arise from replacement of the protons at positions 1, 3 and 7 in the parent compound, xanthine, with various substituents. The substitutions yield a series of active principles of similar chemical structure and slightly different complementary pharmacological activity that has propitiated their joint use in pharmaceuticals. The most common xanthines (caffeine, theo-

phylline) have been successfully separated from pharmaceutical and biological fluids using capillary electrophoresis (CE) [1–4]. In this work, we assessed the ability of the CE technique to resolve other alkylxanthines used in pharmaceuticals, the separation of which has seemingly never to date been addressed.

The purpose was to study the electrophoretic behaviour of a mixture of eight alkylxanthines with pharmaceutical activity in order to find the most suitable working conditions to separate them in future applications. To this end, the performance of various separation modes including capillary zone electrophoresis (CZE) and micellar electrokinetic chromatography (MEKC) (with dodecyl sulfate and bile salt micelles) was assessed and compared. The influence of other experimental variables such as pH,

\*Corresponding author. Tel.: +34-93-5811-017; fax: +34-93-5812-379.

E-mail address: marcel.blanco@uab.es (M. Blanco).

the nature of the surfactant, the presence of an organic modifier and the use of a charged cyclodextrin was also examined.

## 2. Materials and methods

### 2.1. Reagents

Sodium dodecyl sulfate (SDS) and six xanthines (theophylline, dyphylline, proxiphylline, caffeine, pentoxyphylline and enprophylline) were obtained from Sigma. Theophylline-7-acetic acid, theobromine, bile salts and carboxymethyl- $\beta$ -cyclodextrin were purchased from Fluka. A 20 mM solution of disodium tetraborate decahydrate (Merck) dissolved in ultrapure Milli-Q water and adjusted to pH 8.5 unless otherwise noted was used as background electrolyte (BGE). The xanthines were directly dissolved at a concentration of around 0.5 mM in Milli-Q water.

### 2.2. Apparatus

Measurements were made on a  $^{3D}$ CE instrument from Hewlett-Packard (Waldbronn, Germany) equipped with a diode array detector. Hydrodynamic injection at the anode, using a pressure of 50 mbar for 5 s, was used in all experiments. Separations were conducted at 25 °C, using a custom-made fused-silica capillary (Sugelabor, Spain) of 56 cm effective length  $\times$  50  $\mu$ m I.D.

### 2.3. Procedure

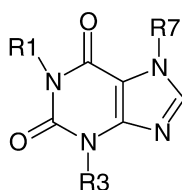
The study was conducted in the above-described buffer, which was supplied with appropriate amounts of the surfactant or cyclodextrin as required. The capillary was conditioned with the BGE for 3 min prior to each injection. Following injection, a voltage of 30 kV was applied (direct polarity) and the electropherogram recorded. Xanthines were detected at 274 nm, where all exhibited maximum absorption. After measurement, the capillary was flushed with 0.1 M NaOH and water for 3 min. Methanol was used as electroosmotic flow (EOF) marker, even though the injection dip recorded at short wavelengths (200 nm) was also useful.

## 3. Results and discussion

Xanthines can be charged and hence separated by CZE, both in a basic medium (as anions) and in an acid one (as cations). However, the separation of xanthines as cations entails using very low pH values as these compounds are very weak bases and some are unstable [5]. Separating them in a basic medium is much easier as the deprotonation of the nitrogen atoms at positions 1 and 7 ( $pK_a=8-10$ ) is favoured by the delocalization of the negative charge. As a result, xanthines bearing alkyl groups on these nitrogen atoms cannot be readily ionized. We studied a mixture of ionizable (1–4) and neutral alkylxanthines (5–8) (Fig. 1).

### 3.1. Capillary zone electrophoresis

The  $pK_a$  values for xanthines allow one to use a pH above 8 in order to ensure their ionization. Fig. 2 shows changes in migration sequence and analyte resolution in the range of pH 8.5–10. As expected, neutral xanthines (dyphylline excepted) were not resolved, so they appeared alongside the EOF throughout the pH range studied. On the other hand, dyphylline migrated and emerged after the EOF although it possessed no ionizable chemical group. Its charge was generated through complexation with borate ions in the BGE. The reaction of borate ions with vicinal diols (such as dyphylline) in a basic medium is well known [6,7]. It was found an increase in effective electrophoretic mobility of dyphylline with increase in pH and the BGE concentration that is consistent with this complexation [6] and confirmed by the fact that replacing the tetraborate in the BGE by a phosphate buffer caused the migration of this xanthine with the EOF. Those xanthines with a free proton at position 7 (theophylline and enprophylline) or 1 (theobromine) are partially ionized and its migration sequence can be explained on the basis of their degree of deprotonation at different pH values. Thus, the migration sequence at pH 9.3 coincided with that of  $pK_a$ , namely: theobromine ( $pK_a=10.0$ )>theophylline ( $pK_a=8.8$ ), enprophylline ( $pK_a=8.4$ )>theophylline-7-acetic acid ( $pK_a\approx 4.7$ ). Raising the pH increased their migration times through increased deprotonation and selectivity changes. This behaviour was not

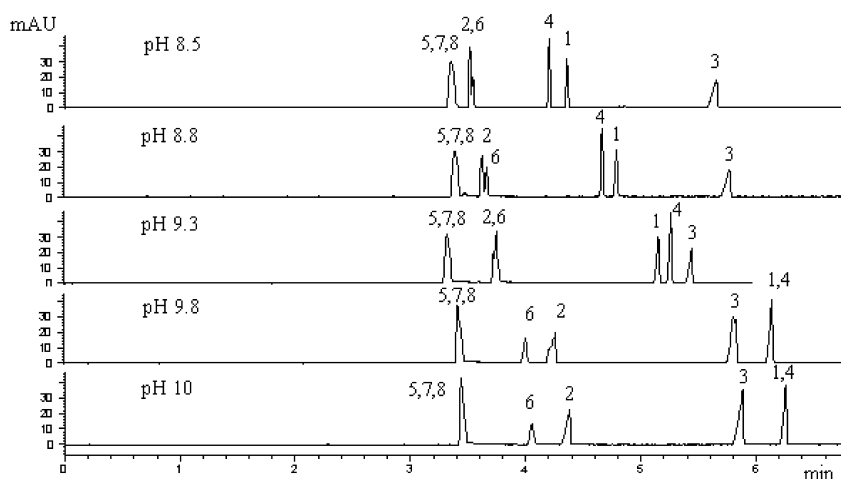


Anionic	R1	R3	R7	pKa
1 Theophylline	-CH <sub>3</sub>	-CH <sub>3</sub>	-H	8.8
2 Theobromine	-H	-CH <sub>3</sub>	-CH <sub>3</sub>	10.0
3 Theophylline-7-acetic acid	-CH <sub>3</sub>	-CH <sub>3</sub>	-CH <sub>2</sub> COOH	4.7
4 Enprofylline	-H	-CH <sub>2</sub> CH <sub>2</sub> CH <sub>3</sub>	-H	8.4
Neutral				
5 Caffeine	-CH <sub>3</sub>	-CH <sub>3</sub>	-CH <sub>3</sub>	
6 Diphylline	-CH <sub>3</sub>	-CH <sub>3</sub>	-CH <sub>2</sub> CHOHCH <sub>2</sub> OH	
7 Proxiphylline	-CH <sub>3</sub>	-CH <sub>3</sub>	-CH <sub>2</sub> CHOHCH <sub>3</sub>	
8 Pentoxifylline	-(CH <sub>2</sub> ) <sub>4</sub> COCH <sub>3</sub>	-CH <sub>3</sub>	-CH <sub>3</sub>	

Fig. 1. Identification numbers and structures of alkylxanthines studied.

observed in theophylline-7-acetic acid (3) because the acetic group was fully deprotonated at the working pH, so the electrophoretic mobility of this xanthine remained virtually constant whatever the

pH. Best resolution was obtained in the range of pH 8.5–9.3 because at higher pH values the overlap between enprofylline (4) and theophylline (1) occurs.

Fig. 2. Variation of the CZE resolution of xanthines with pH using 20 mM sodium tetraborate as BGE.  $T=25\text{ }^{\circ}\text{C}$ .  $V_{\text{app}}=30\text{ kV}$ .

### 3.2. Cyclodextrin electrokinetic chromatography (CD-EKC)

The inability to separate neutral xanthines led us to test the addition of an anionic cyclodextrin (viz. carboxymethyl- $\beta$ -cyclodextrin, CM- $\beta$ -CD) to the BGE. Inclusion into this anionic cyclodextrin allowed the xanthines to acquire electrophoretic mobility. We conducted tests at pH 8.5 or 9.3 containing the anionic cyclodextrin. At these pH values, neutral xanthines were in fact included in the cyclodextrin and thus were shifted with respect to the EOF and ionizable xanthines were resolved at longer times with the migration order observed in the CZE experiments. However, the inclusion constants for neutral xanthines were not different enough to allow their separation; this resulted in the obtainment of five partially overlapped peaks (neutral xanthines and theobromine). We increased CM- $\beta$ -CD concentration to 15 mM in an attempt to improve resolution. The results reflected better separation of neutral xanthines from the EOF but no improved resolution.

### 3.3. Micellar electrokinetic chromatography

In order to achieve the migration of neutral xanthines, it was studied the electrophoretic behaviour of the analytes in a BGE containing SDS or bile salts, which form micelles of different nature and geometry [8].

#### 3.3.1. MEKC with SDS micelles

We examined the effect of SDS concentrations over the range 10–200 mM in the BGE that was previously found to provide best resolution (20 mM tetraborate, pH 9.3). The variation of the migration time with the SDS concentration (Fig. 3) exhibited two different patterns corresponding to neutral and anionic xanthines. The migration times for anionic xanthines varied very little with SDS concentration (they exhibited straight lines of near-zero slope), which suggest a weak interaction of these analytes with the micelles owing to electric repulsions. The more marked variation of the migration time for theobromine relative to the other ionizable xanthines can be ascribed to its weak ionization and hence to its stronger interaction with the surfactant micelles at pH 9.3.

The migration times for the neutral xanthines increased substantially with increasing SDS concentration. Pentoxiphylline was the xanthine most strongly interacting with SDS. Proxiphylline and caffeine also interacted strongly with the micelles but exhibited constant migration times. The similar polarity of both xanthines is the apparent origin of this behaviour. Again, dyphylline behaved differently from the other neutral xanthines; in fact, it interacted only weakly with SDS as it formed negatively charged complexes with borate ions in the BGE.

A 100 mM SDS concentration was adopted as optimal for further experiments as it provided a wide enough window for elution of the neutral xanthines. However, the conditions used (20 mM tetraborate, pH 9.3, 100 mM SDS) resulted in overlap between caffeine and proxiphylline, and between enprophylline and theophylline. In order to resolve these xanthine pairs, we examined the effect of pH on the micelle separation mode over the range 8.5–10. The migration times for the neutral analytes were found not to be affected by the pH (interactions with the micelles were not altered), whereas those for the anionic analytes changed in the same manner as in CZE. The two extreme pH values tested (8.5 and 10) allowed seven of the eight peaks to be resolved (with variable selectivity); those for caffeine and proxiphylline, however, continued to be overlapped. Intermediate pH values resulted in partial or total overlap of the ionizable xanthines.

The addition of methanol to adjust the partition coefficients [9] for caffeine and proxiphylline and improve its resolution was useless because only a partial resolution at high solvent contents (>10%) was obtained and the peaks were broader and analysis times longer.

#### 3.3.2. MEKC with bile salt micelles

Bile salts have been used to resolve analytes with aromatic rings or polycyclic structures [8]. Alkyl-xanthines possess a structure potentially capable of interacting with bile salts. We tested sodium taurodeoxycholate (STDC), sodium taurocholate (STC), sodium deoxycholate (SDC) and sodium cholate (SC) at concentrations exceeding the critical micelle concentration that is in the range 5–15 mM depending on the bile salt.

In a solution containing 50 mM STDC, the

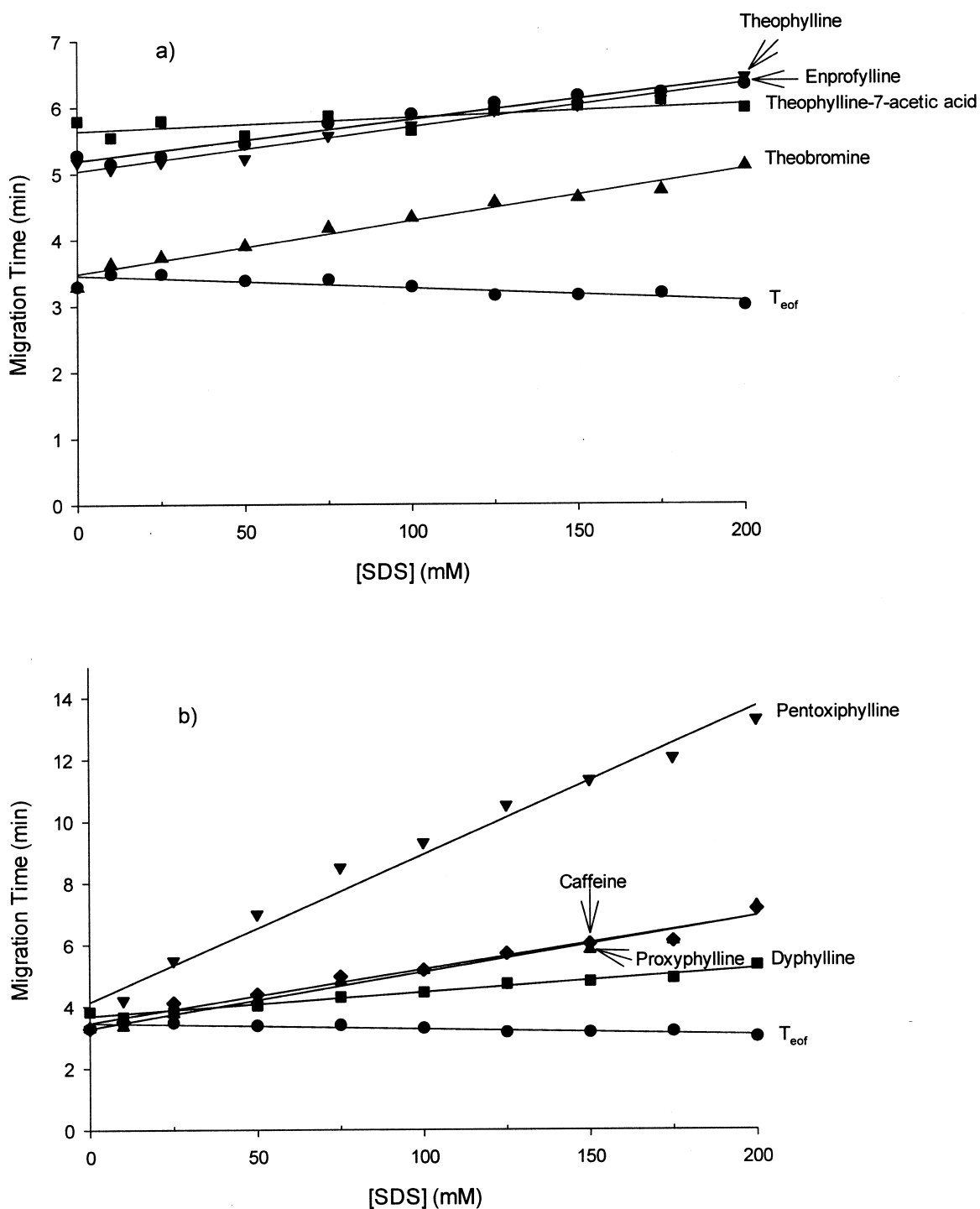


Fig. 3. Effect of the SDS concentration on the migration time of the xanthines. (a) Ionizable xanthines. (b) Neutral xanthines. BGE: 20 mM tetraborate pH 9.3.  $T=25^{\circ}\text{C}$ .  $V_{app}=30\text{ kV}$ .

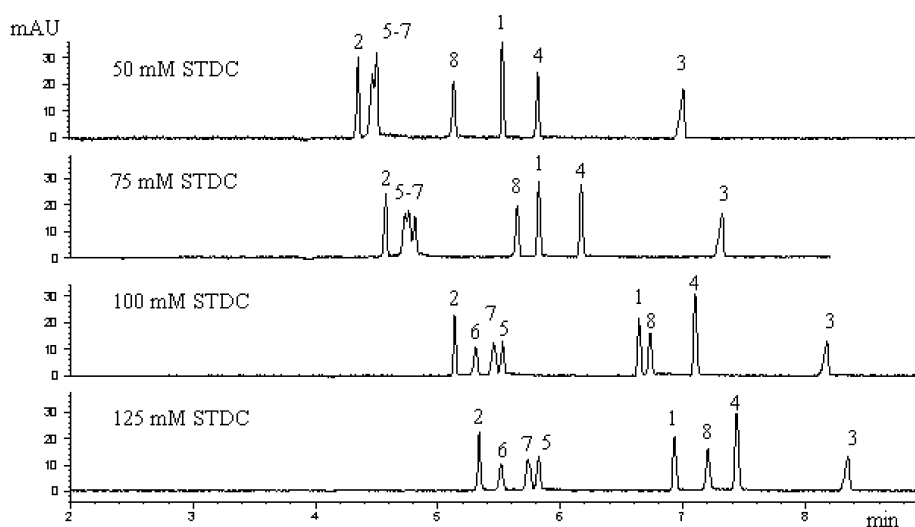


Fig. 4. Effect of the sodium taurodeoxycholate concentration on the separation of xanthines in a BGE consisting of 20 mM tetraborate at pH 8.5.  $T=25^{\circ}\text{C}$ .  $V_{\text{app}}=30$  kV.

ionizable xanthines migrated in the expected sequence, dictated by their  $pK_a$  values, whereas the neutral ones (pentoxiphylline excepted) were partially overlapped (Fig. 4). Increasing the STDC concentration increased resolution among the neutral xanthines. With a 125 mM concentration, the eight xanthines were resolved to baseline. The experiments with STC and SC revealed their inability to resolve the neutral xanthines (pentoxiphylline excepted) over the concentration range studied (50–150 mM). The results with SDC were similar to those provided by STDC; however, the resolution between caffeine and proxyphylline was poorer. Raising the SDC concentration to 150 mM failed to improve the situation; it merely altered the migration order between pentoxiphylline and theophylline.

A comparative study of the separation with taurodeoxycholic and deoxycholic acids against their 2-hydroxy counterparts revealed the absence of the hydroxyl group to result in improved discrimination of caffeine and proxyphylline, and the presence of a taurine residue instead of the carboxyl group to have little effect on the resolution of this analyte pair.

#### 4. Concluding remarks

The electrophoretic behaviour of some alkyl-

xanthines have been studied using different operation modes and additives in the BGE. CZE allows one to separate charged alkylxanthines and dyphylline that behaves as an anionic substance through complexation with borate ions in the BGE. The neutral xanthines interact with CM- $\beta$ -CD, but the interaction is not strong enough to allow its resolution to baseline. In MEKC, bile salts exhibit a higher discrimination ability than SDS to separate similar xanthines. The complete separation of the mixture in a short time is possible with taurodeoxycholic acid. These conclusions have been used to develop a simple and rapid method to analyse a mixture of alkylxanthines in a pharmaceutical preparation [10].

#### Acknowledgements

The authors are grateful to Spain's DGICYT for funding this research within the framework of project BQU2000-0234.

#### References

- [1] Y. Zhao, E.C. Lunte, J. Chromatogr. B 688 (1997) 265.
- [2] P.C. Edward, E. Dabek-Zlotorzynska, Electrophoresis 20 (1999) 2366.

- [3] M. Korman, J. Vindevogel, P. Sandra, *Electrophoresis* 15 (1994) 1304.
- [4] M.C. Linhares, P.T. Kissinger, *J. Chromatogr.* 615 (1993) 327.
- [5] J.A. Joule, K. Mills, G.F. Smith, in: *Heterocyclic Chemistry*, Chapman and Hall, London, 1995, p. 409.
- [6] S. Hoffstetter-Kuhn, A. Paulus, E. Gassmann, M.H. Widmer, *Anal. Chem.* 63 (1991) 541.
- [7] T. Soga, Hewlett-Packard Application Note: Capillary Zone Electrophoresis of Carbohydrates By Borate Complexation Utilizing EOF Reversal, Hewlett-Packard, 1995.
- [8] H. Nishi, *J. Chromatogr. A* 735 (1996) 57.
- [9] R.O. Cole, M. Sepaniak, W.L. Hinze, G. Oldiges, K. Oldiges, *J. Chromatogr.* 557 (1991) 113.
- [10] M. Blanco, I. Valverde, *Electrophoresis*, in press.